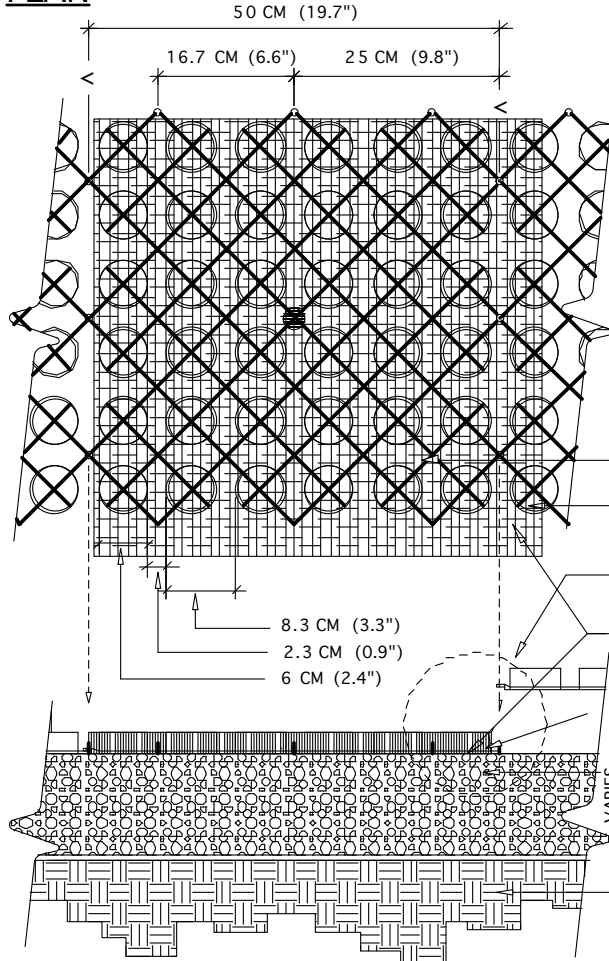


NOTES: TURN OFF DOFF LAYER PRIOR TO PLOTTING.

HATCH DOFF HATCH LIMITS IN PLAN & ENLARGEMENT TO MATCH YOUR PLOT CONFIG.

PLAN



SPECIFICATIONS

UNITS

UNIT SIZE - 50 CM X 50 CM X 2.5 CM
(20" X 20" X 1")

AVAILABLE IN 9 STANDARD ROLL SIZES

UNIT WEIGHT - 538 GRAMS (19 OZ.)
OR 2.2 KG (4.8 POUNDS)

STRENGTH - 402 KG/CM² (5720 PSI)

COLOR - BLACK (STANDARD)

RESIN - 100% POST-CONSUMER
RECYCLED HDPE/LDPE

FABRIC

WEIGHT - 3.5 OZ/SY (120 GM/M²)

TENSILE - 120 LB/FT² (585 KG/M²)

FLOW - 275 GAL/MIN/SF (11,200 L/MIN/M²)

OPTIONS - CUSTOM FABRIC TO 6 OZ
AVAILABLE.

GRAVELPAVE2

ADJACENT GRAVELPAVE2

SEE ENLARGEMENT BELOW

FILTER FABRIC ATTACHED TO
BOTTOM OF GRAVELPAVE2

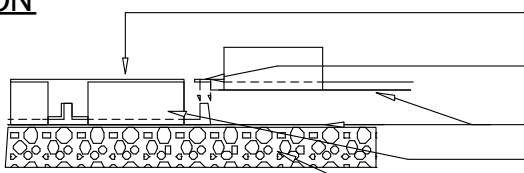
GRAVELPAVE2 FILLED WITH 3/16" TO 3/8"
ANGULAR GRAVEL, UNIFORM SIZE, WASHED

COMPACTED SANDY GRAVEL ROAD BASE
- 95% MODIFIED PROCTOR DENSITY

COMPACTED SUBGRADE

VARIES
AS PER LOADING
REQUIREMENTS

SECTION



TOP OF GRAVEL

GRAVELPAVE2 ATTACH WITH
SNAP FIT FASTENERS

FILTER FABRIC - OVERLAPPING JOINTS

FILL RING SECTION WITH
3/16" TO 3/8" ANGULAR GRAVEL, UNIFORM SIZE, WASHED

COMPACTED SANDY GRAVEL
BASE COURSE

ENLARGEMENT

TYPICAL GRAVELPAVE2 DETAIL

1
1 OF 1

NOT TO SCALE

CHOOSE THIS PRODUCT FOR REINFORCING GRAVEL WEARING SURFACES

Invisible
Structures, Inc.

Gvdet.dwg

1600 Jackson Street, SUITE 310
GOLDEN, COLORADO 80401
800-233-1510 OR 303-233-8383
FAX: 303-233-8282
Version 05/10